

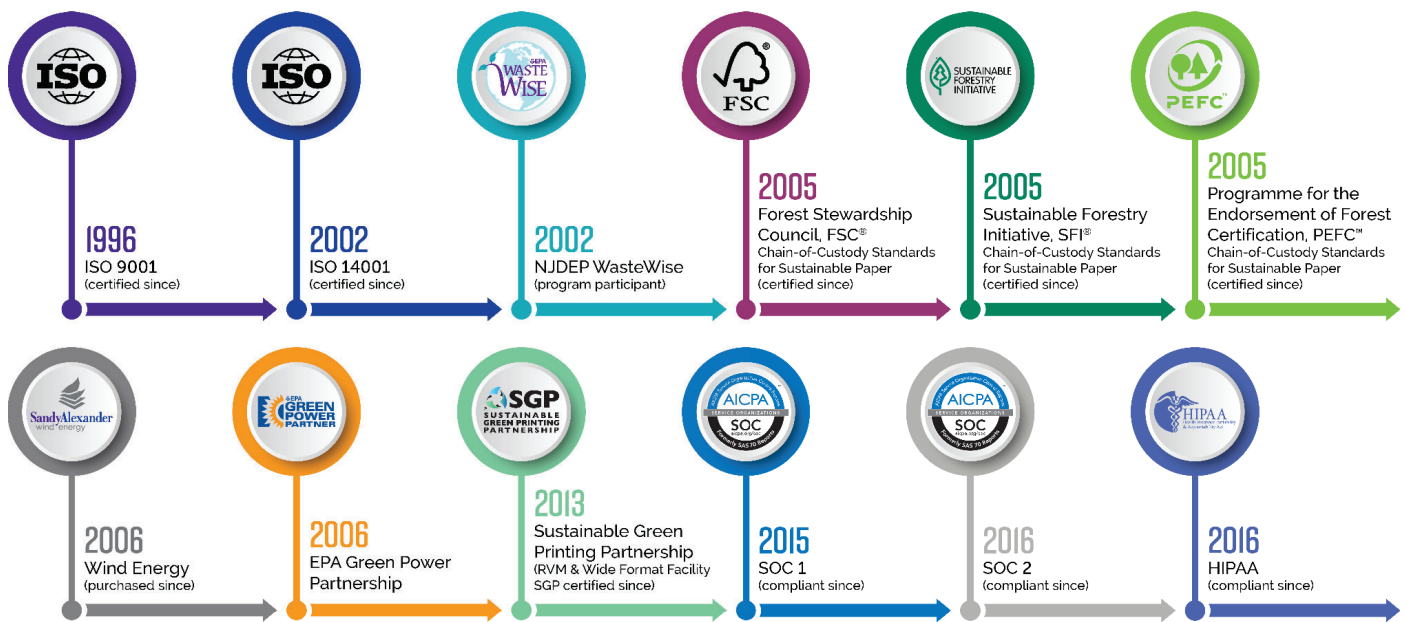
SUSTAINABILITY QUICK FACTS AT SANDY ALEXANDER

SUSTAINABILITY-ENVIRONMENTAL POLICY:

Sandy Alexander is committed to improving our sustainability performance and reducing the impact of printing on the environment.

- Prevent pollution
- Reduce waste through source reduction and recycling
- Identify and comply with applicable environmental, health and safety regulations and applicable Federal, State and local employment labor laws
- Communicate our performance to all stakeholders
- Implement and maintain the SFI®, FSC®, and PEFC™ chain of custody programs according to each program's requirements

SANDY ALEXANDER CERTIFICATION TIMELINE:



SandyAlexander

SUSTAINABILITY LOGOS:





SUSTAINABILITY QUICK FACTS AT SANDY ALEXANDER

FACTS & INFORMATION:

- >90% of our paper is COC, meaning it is either recycled post-consumer waste or virgin pulp milled from sustainable forrests
- End Of Life logos - we have the ability to create logos for products that mark them for sustainable disposal
- All in- house ink production is INX Sheetfed PANTONE Color Based inks and contain high percentages of soy and other vegetable oils to qualify to carry the ASA Soya logo
- All UV inks have zero to low VOCs
- Sandy Alexander facilities are powered by wind energy, we purchase wind energy credits annually
- Sandy Alexander has won several environmental awards such as the What They Think! Environmental Innovation Award

CERTIFICATIONS & PARTNERSHIPS:

- ISO 14001 Environmental Management
- SGP (Sustainable Green Printer) *Wide & Grand Format Only
- EPA Green Power Partner
- NJDEP WasteWise Partner
- FSC® (Forest Stewardship Council)
- SFI® (Sustainable Forestry Initiative)
- PEFC™ (Programme for the Endorsement of Forest Certification)

CHAIN OF CUSTODY (COC) INFORMATION:

Chain of custody refers to the chronological documentation or paper trail that shows the custody, control, and transfer of the tree/paper from the forest to the mill to the printer to the final product. Proper labeling is critical to the process because each step must be able to be traced back to the beginning. These standards were created for the responsible management of the world's forests. The standards are separate and cannot be interchanged. For example, you cannot have an SFI and FSC logo on the same piece. You also cannot substitute paper.

The COC process is focused on sustainability. Paper mills use sustainable forests to mill paper as well as post consumer waste. In order to verify that we are printing on this "environmentally conscious" paper the process needs to be monitored. Therefore, paper mills, paper distributor, and printing companies have their own COC guidelines to follow depending on what standard it applies to. The amount of recycled fibers in the paper stock determines the type of logo that can be printed on that stock. The purpose of the logo is to inform the public or whomever is receiving the piece that it was printed with sustainable practices and on environmentally friendly paper.